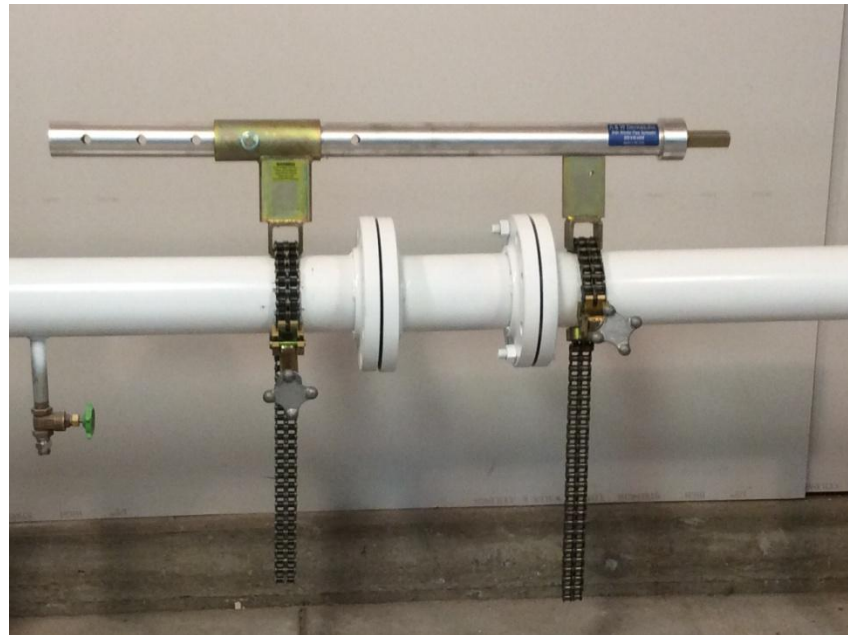
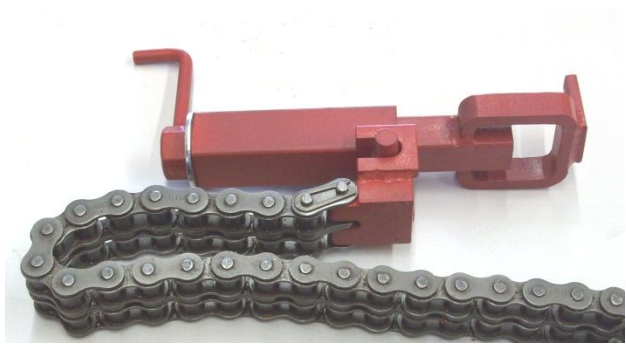




Side Winder Pipe Spreader™





Side Winder Pipe Spreader Parts

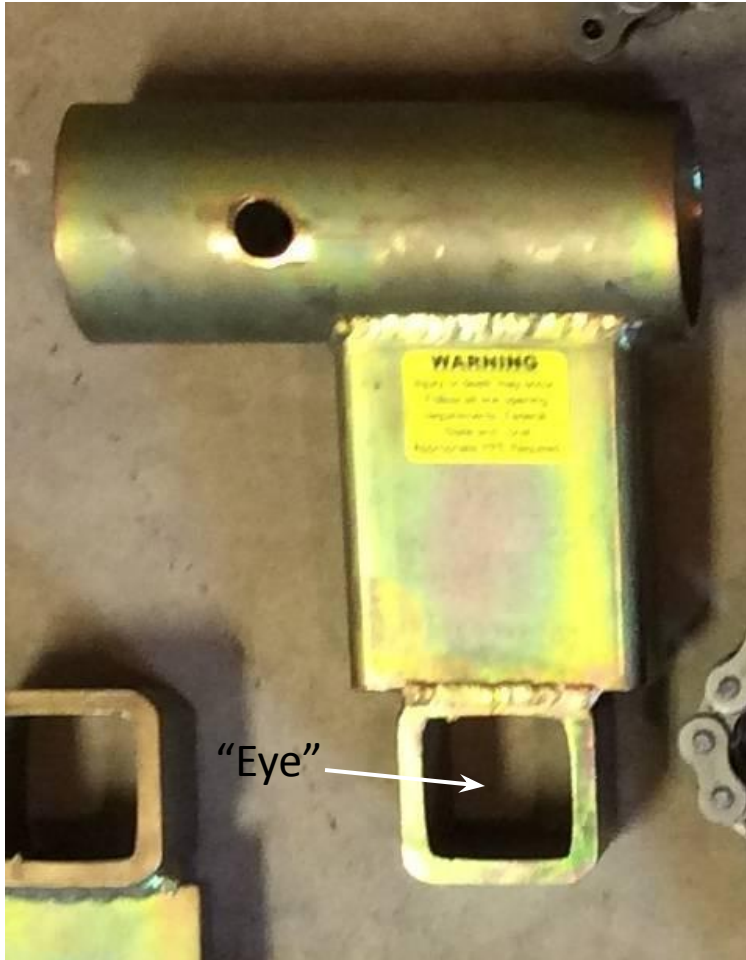


Aluminum Tube

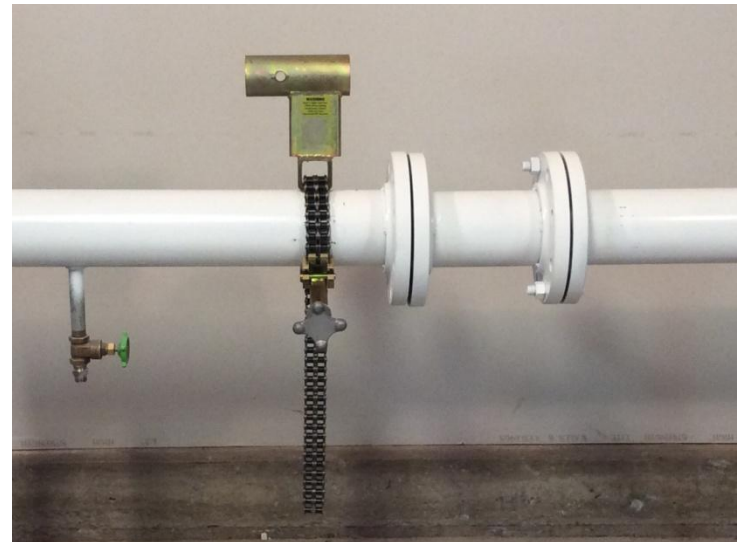


The body of the Side Winder Pipe Spreader is an Aluminum tube. There is an Inner Tube Attachment with an eye for the Screw Assembly. On the end of the tube is where the Outer Tube Attachment slides and is secured at the correct length.

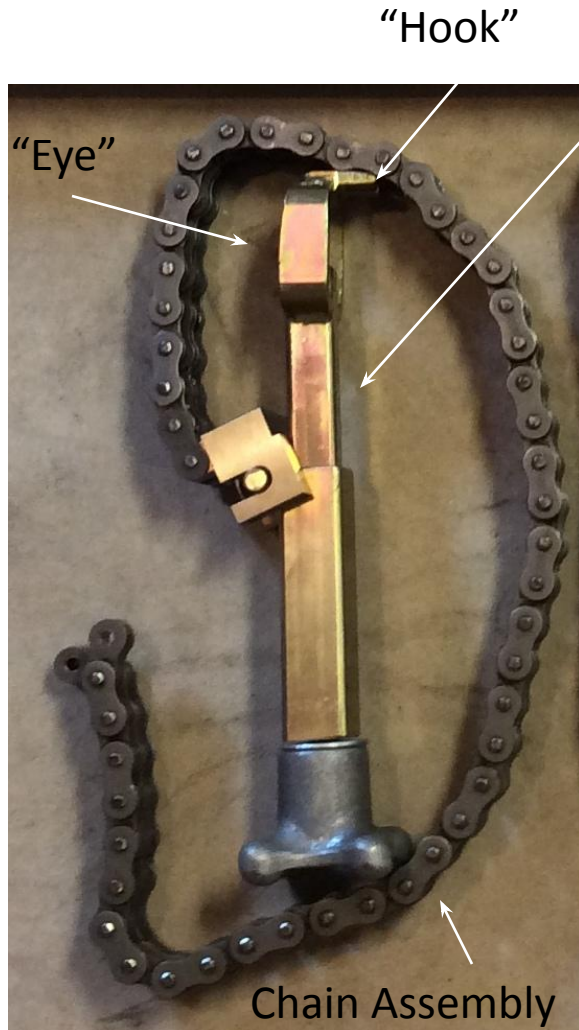
Outer Tube Attachment



The outer Tube Attachment has a hole on the top tube section to secure the piece to the Tube. The lower portion of the attachment has the "Eye" which is where the Chain/Screw Assembly is threaded. Attach Chain/Screw Assembly to pipe.

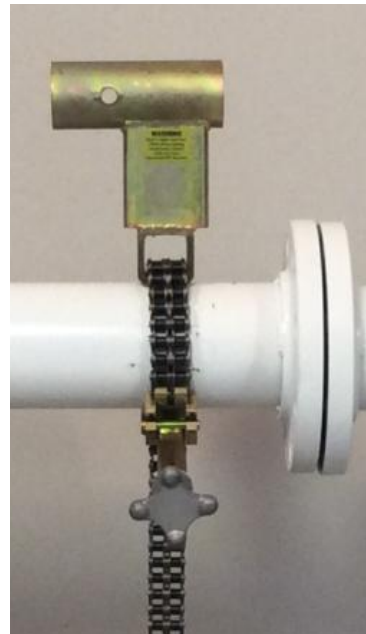


Chain/Screw Assembly



Screw Assembly

Place Outer Tube Attachment on the pipe. Insert chain thru the “Eye” of the Outer Tube Attachment. Thread chain through back of “eye” of the Screw Assembly.



Flip chain back through the hook

