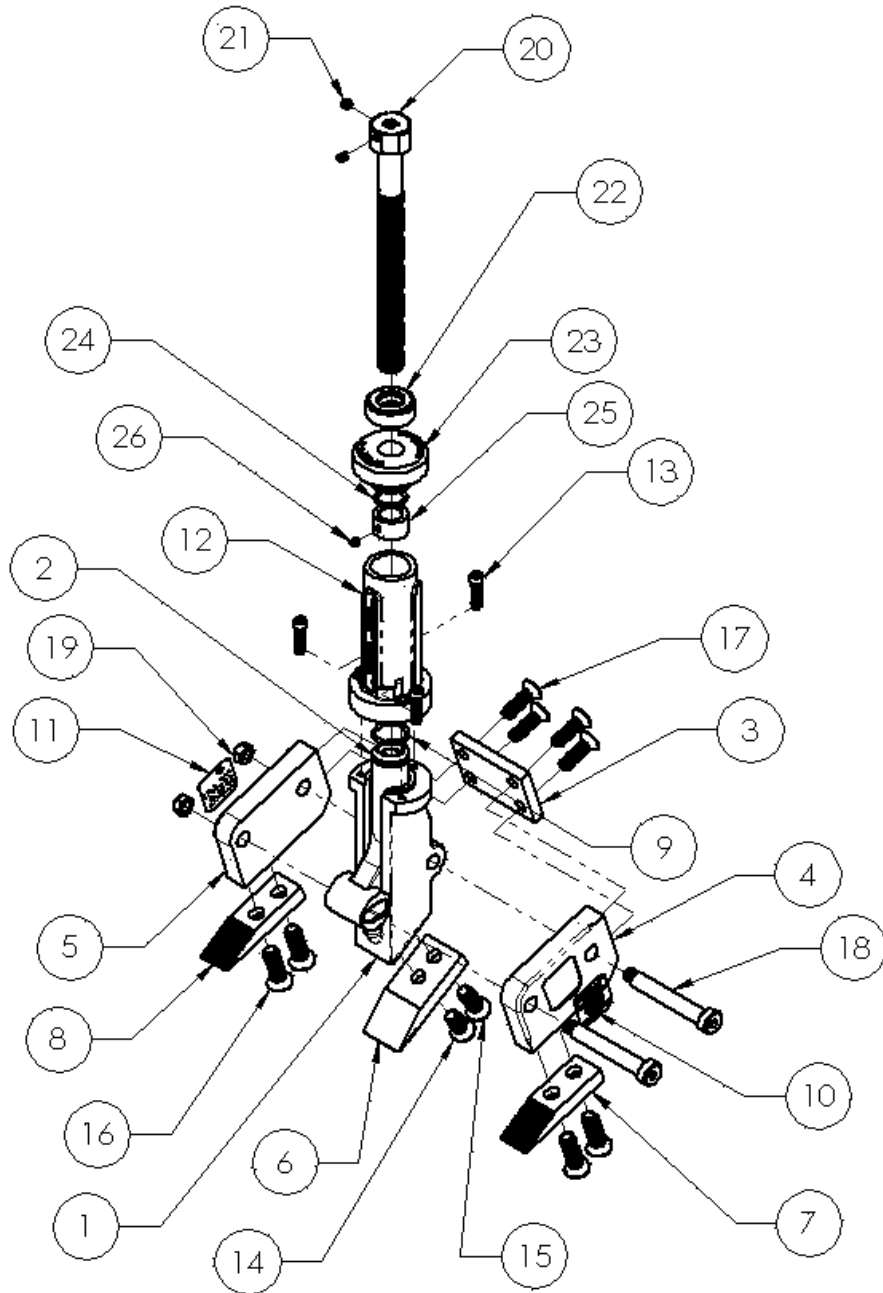


comes free. After removing the chock, flip the direction switch to the right. Turn the ratchet handle counter clockwise until the equipment is lowered to its desired position. Remove the tool.

## Replacement Parts



<b>Item No.</b>	<b>Qty</b>	<b>Part No.</b>	<b>Description</b>
1	1	PD0502	Body
2	1	PC0501	Riser
3	1	PB0503	Striker plate
4	1	PC0504L	Side plate (left)
5	1	PC0504R	Side plate (right)
6	1	PB0511	Inside toe
7	1	PB0512L	Outside toe (left)
8	1	PB0512R	Outside toe (right)
9	1	HXOR03	O-ring
10	1	LBL-093	Patent label
11	1	LBL-094	Caution label
12	1	PD0505	Handle
13	3	HXS056	Socket head cap screw 1/4-20UNC x 1
14	1	HXS057	Countersunk socket head cap screw 7/16-14UNC x 1
15	1	HXS064	Countersunk socket head cap screw 7/16-14UNC x 1-1/4
16	4	HXS065	Countersunk socket head cap screw 7/16-14UNC x 1-1/2
17	4	HXS058	Countersunk socket head cap screw 3/8-16UNC x 1
18	2	HXS059	Socket head shoulder screw 1/2 x 3
19	2	HXN065	Locking nut 3/8-16UNC
20	1	PC0508	Drive screw
21	2	HXSS006	Cup point set screw 1/4-20UNC x 1/4
22	1	HXB03	Thrust bearing
23	1	PB0507	End cap
24	1	HS33	Wave spring washer
25	1	PB0506	Locking sleeve
26	1	HXSS007	Cup point set screw 1/4-20UNC x 3/16
27	1	PC0509	Ratchet (not shown)